



JUNE 2025

# 4-H Family News

Washtenaw County



## 4-H Kitchen Coordinators Needed

Thank you to everyone who attended our 4-H Kitchen Gathering last week. We once again do not have a 4-H Kitchen Coordinator and are looking to split up the responsibilities this year. We are looking for folks willing to commit to at least 2 days coordinating the Kitchen.



Without a 4-H Kitchen Coordinator, we will be unable to open the 4-H Kitchen during the 2025 Youth Show. This is the only food option available at the Youth Show.

We would especially appreciate a volunteer(s) who have a background in food service, ServSafe certified, or willing to do a ServSafe Food Handler class with 4-H staff. Check out the [full position description here](#).

If you know anyone interested, please have them contact, Jenny Speyer, at [speyerje@msu.edu](mailto:speyerje@msu.edu) or 734-436-1362.

## UPCOMING MEETINGS & EVENTS:

### FairEntry Webinar

June 8<sup>th</sup> at 7 pm on Zoom

### Livestock & Dairy Committee

June 12<sup>th</sup> at 7 pm at the MSU Extension Office

### Horse Association Meeting

June 24<sup>th</sup> at 7 pm at the MSU Extension Office

### Still Project Committee Meeting

June 24<sup>th</sup> at 7 pm on Zoom

### 4-H Youth Show Leaders Meeting

June 25<sup>th</sup> at 6:30 pm at the MSU Extension Office

### Farm Council Grounds Clean Up

June 30<sup>th</sup> from 6-8 pm at the Washtenaw Farm Council Grounds

## CONTACT US

**Amy Harris**

4-H Program Coordinator

[harr1976@msu.edu](mailto:harr1976@msu.edu)

**Jenny Speyer**

4-H Program Instructor

[speyerje@msu.edu](mailto:speyerje@msu.edu)

705 N. Zeeb Rd.,  
P.O. Box 8645  
Ann Arbor, Michigan  
48107

## PHONE & EMAIL:

734-997-1678

[msue.washtenaw@county.msu.edu](mailto:msue.washtenaw@county.msu.edu)

## WEBSITE:

<https://www.canr.msu.edu/washtenaw/>

Michigan State University Extension programs and materials are open to all without regard to race, color, national origin, gender, gender identity, religion, age, height, weight, disability, political beliefs, sexual orientation, marital status, family status or veteran status. Issued in furtherance of MSU Extension work, acts of May 8 and June 30, 1914, in cooperation with the U.S. Department of Agriculture. Quentin Tyler, Director, MSU Extension, East Lansing, MI 48824. This information is for educational purposes only. Reference to commercial products or trade names does not imply endorsement by MSU Extension or bias against those not mentioned.



# COUNTY 4-H NEWS

## FairEntry Registration for 4-H Youth Show

### Fair Entry

[FairEntry Registration is now open](#) for the Washtenaw County 4-H Youth Show. Registration is open from now until June 13th at 11:59 pm.

**There will be a late fee of \$50 per exhibitor for 4-H Youth Show entries not submitted or requested changes after the June 13th FairEntry deadline.**

As FairEntry closes at 11:59pm on June 13th exhibitors must contact 4-H staff for change requests. If you wish to modify or add entries and pay the late fee you **MUST** request changes to be made by June 23rd. Late Fees **MUST** be paid by cash or check (payable to Washtenaw County 4-H Youth Show) and submitted or mailed to MSU Extension Office at 705 N Zeeb Rd, PO Box 8645, Ann Arbor, MI 48107.

For those who do not have internet access, online registrations may be completed at the MSU Extension office from May 30th until June 13th. We are also offering FairEntry office hours on Tuesday, June 3<sup>rd</sup> from 5-7 pm. If you plan to attend, you **MUST** bring a list of entries that your 4-H'er wants to enter. We will not be able to provide help picking specific entries for your child. Contact 4-H staff before the deadline to schedule an appointment at 734-997-1678.

The 4-H Youth Show Book for 2025 is now available online and changes are marked in gray. Books are available for purchase at the MSU Extension Office for a cost of \$5 cash or check (exact change please).

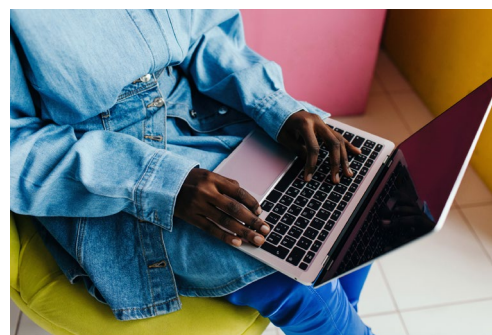
## Washtenaw County 4-H Youth Show FairEntry Webinar: June 8<sup>th</sup> at 7 pm

To help families with registration for the Washtenaw County 4-H Youth Show we will be hosting a FairEntry Webinar on Sunday June 8<sup>th</sup> at 7 pm to walk through the steps to register a 4-H'er for the Washtenaw County 4-H Youth Show. If you are unable to attend, we will record the webinar and send it out to families after.

Zoom Link: <https://msu.zoom.us/j/97013845193>

Meeting ID: 970 1384 5193

Passcode: 324357



## Traveling Trophies & Plaques are Due Back to the MSU Extension Office



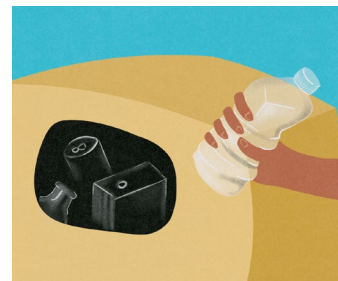
If you won a traveling trophy or plaque last year at the Washtenaw County 4-H Youth Show, it is now time to return these items to the MSU Extension Office. The office is open Monday-Friday 8:30 am – 3:30 pm (closed for lunch from 12-1 pm). If you need to schedule a time outside those hours, please contact us. Trophies and plaques should be returned no later than July 1st so we can assess their status and polish them up for the next recipient. These trophies mean a lot to the 4-H program, and particularly to the families who donated most of them in memory of a past 4-H participant and family member. Thank you for being a good trophy steward!



# COUNTY 4-H NEWS

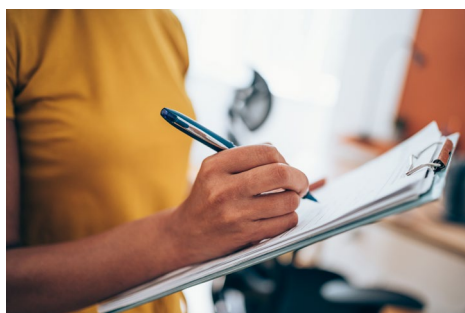
## Washtenaw Farm Council Grounds Clean Up Day: June 30<sup>th</sup> 6-8 pm

Washtenaw County 4-H will be hosting a clean up day at the Washtenaw Farm Council Grounds on Monday, June 30<sup>th</sup> from 6-8 pm. This is open to all 4-H'ers, families, and volunteers. Participants will be helping with picking up litter on the grounds and potentially helping with weeding and planting. Washtenaw Farm Council is the home of Washtenaw County 4-H and we want to be good stewards and keep it clean! Pizza and water will be provided so RSVP below.



Clean Up Day RSVP: <https://forms.gle/NUXDa11KRbi9jLD19>

## Still Project Judges, Clerks, and Runners Needed for 4-H Youth Show



Every club with member(s) participating in Still Projects of any type (Dept 60 and higher) is **required** to provide at least one full shift clerk or runner or at least two half shift clerks or runners to assist with judging. Remember, the 4-H Youth Show can't happen without YOU!

Clerks and runners are needed Sunday, July 20<sup>th</sup>, 12:30 PM-4:30 PM in Building B (Open Pavilion). Clerk Orientation **MUST** be completed prior to this time either in person at the Youth Show or with our Still Project Superintendents before hand. Clerks and runners can be **anyone** who

meets the age requirements— 4-H members, parents, leaders, alumni, grandparents, friends, etc. Check out the [Sign Up Form](#) for more information on the roles and age requirements. We are also looking for Still Project Judges who are flexible and have expertise in various Still Project Areas. If you know someone interested, please contact Jean Martin, [jmmartin@umich.edu](mailto:jmmartin@umich.edu).

## Now Accepting 2025 Washtenaw County 4-H Youth Show Sponsorships

Help support educational opportunities for youth at the 2025 4-H Youth Show. Sponsors are needed for the many awards that will be distributed at the Youth Show. Sponsors can choose from a variety of project areas including livestock, horse, still projects, and more! Sponsor names will be given to the 4-H'er receiving the award, as well as publicized during the event and on printed materials for the program year. We also encourage 4-H'ers and 4-H families to tell local businesses and individuals about the opportunities to sponsor.

The deadline for sponsorships to be announced is July 1<sup>st</sup>, but we will always take sponsorships after this deadline. Sponsorships are assigned on a first come, first served basis.



Ready to sponsor? Check out the sponsorship letter [here](#) and check out the sponsorship form [here](#).





# COUNTY 4-H NEWS

## Save the Dates: Upcoming 4-H Youth Show Related Meetings



We want to remind our 4-H Leaders and Superintendents that we have a few upcoming meetings to prepare for the Washtenaw County 4-H Youth Show. If you are a 4-H Club Leader and unable to attend, please send a parent or volunteer from your club. If you are a superintendent and cannot attend any of these, please let us know!

- **4-H Youth Show Leader Meeting on June 25<sup>th</sup> at 6:30 pm at the MSU Extension Office**
  - 4-H Club leaders will turn in pen counts, pen fees, youth exhibitor fees, and sign ups.
- **4-H Horse Association Horse Packet Stuffing on July 7<sup>th</sup> at 7 pm at the MSU Extension Office**
  - 4-H horse and pony exhibitors and volunteers help stuff packets for the 4-H Youth Show.
- **Youth Show Superintendents Meeting on July 9<sup>th</sup> at 6:30 pm at the Washtenaw Farm Council Grounds**
  - Superintendents will receive their boxes and go over set up instructions for WFCG Staff, and FairEntry.

## Washtenaw County 4-H Youth Show Auction Buyer Letter

For youth with a market animal project, it is time to start contacting your past and potential buyers! You can write your own invitation and personally talk to people, but we also have paper copies of a generic buyer letter at the MSU Extension Office. You can also print the Buyer Letter from [our website](#). Just remember, personal invitations with photos are some of the best ways to market your animal!



## Washtenaw County 4-H Youth Show Camping with Washtenaw Farm Council



If you are interested in camping at the Washtenaw County 4-H Youth Show the week of July 20<sup>th</sup> through July 26<sup>th</sup>, please contact the Washtenaw Farm Council Grounds Staff as soon as possible via email at [wfc5500@gmail.com](mailto:wfc5500@gmail.com) with the following information:

- Your Name
- Your 4-H Club
- Your Requested Amperage (30 or 50)
- Your Stay Duration .

There are a limited number of camping spots so act quickly to secure your spot. The 4-H Office does not coordinate camping so do not reach out to our office with questions.



# COUNTY 4-H NEWS

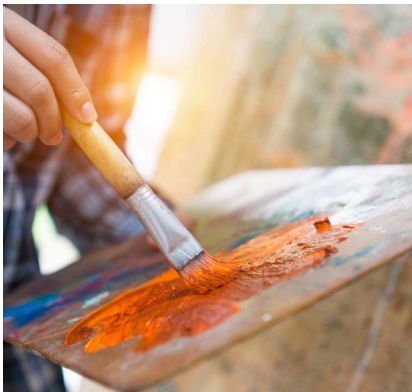
## Now Accepting 2025 Washtenaw County 4-H Scholarship Applications

We are now accepting applications for the Washtenaw County 4-H Scholarship listed below. There is also a Washtenaw County Farm Bureau Scholarship for youth ages 15-19 years old. Below are the deadlines for the applications and links to the application forms. These are great opportunities for youth to apply and practice their application skills! Questions? Please contact Jenny Speyer, 4-H Program Instructor at [speyerje@msu.edu](mailto:speyerje@msu.edu)



- [Washtenaw County 4-H Dairy Scholarship](#): Due July 1<sup>st</sup>
- [Washtenaw County 4-H Poultry Scholarship](#): Due July 1<sup>st</sup>
- [Washtenaw County 4-H Scholarship](#): For 2026 Seniors, Due September 5<sup>th</sup>
- [Outstanding Involvement in Agriculture Award for 4-H Member](#): Due August 11<sup>th</sup>

## Club & Individual Trash Cans Available after June 6th



Does your club or 4-H'er need a trash can to decorator for the Washtenaw County 4-H Youth Show? Come pick them up at the Washtenaw Farm Council Grounds, 5055 Ann Arbor-Saline Rd, Ann Arbor, MI starting June 6<sup>th</sup>. Trash cans will be outside the main gate for you to pick up. Keep in mind we recycle trash cans so they will be used. If you want a brand-new trash can, clubs are welcome to buy one and donate it to the Washtenaw Farm Council Grounds.

## Washtenaw County 4-H Horse Association is Looking for Youth Delegates and Adult Volunteers for the State Horse Show August 14-17

Washtenaw County 4-H youth who participate in horse projects are invited to register as a delegate for the State Horse Show on August 14-17<sup>th</sup>. The registration is first come, first served. Youth have until July 1<sup>st</sup> to complete the form and Washtenaw County can send up to 13 delegates. Currently we have enough delegate volunteers, but may need 1 more as a back up. If you would like to volunteer, let Amy Harris know.

If you have a youth interested in attending, please contact Amy Harris, [harr1976@msu.edu](mailto:harr1976@msu.edu).







# COUNTY 4-H NEWS

## Washtenaw County 4-H Member Shepherd Thompson Attends World Food Prize as a Roundtable Expert



This year, 4-H member Shepherd Thompson attended World Food Prize to serve as a roundtable expert! Here is his thoughts on this opportunity:

'At the World Food Prize Michigan Youth Institute, it was amazing to hear different kids my age from across the state finding innovative solutions to solve food insecurity. Everyone had clearly put time and effort into writing their papers and researched their countries well. Also, visiting MSU's Bug Lab was fascinating, and though I am still not a bug person, it was really interesting to see those who are, and how much they have learned from the bugs and what they study there. Finally, it was amazing to catch up with other WFP GYI alumni that came back to be experts. The Michigan Youth Institute was once again an awesome experience and I am sure that this year Michigan will send worthy candidates to Iowa for the Global Youth Institute.'

I highly recommend if you are within the age requirements to write the paper next year and see where it takes you; many opportunities have already arisen for me.'

If you are interested in attending in 2026, check out <https://www.canr.msu.edu/wfpmyi/>

## Washtenaw County 4-H Dairy Team Attended Michigan 4-H Dairy Conference

There were 8 youth and 3 volunteers from the Washtenaw County 4-H dairy program, who attended the 2025 Michigan 4-H Dairy Conference at Michigan State University. The event included informational sessions, dissections, and a tour of the MSU Dairy Processing Plant.

The participants attended sessions that covered artificial intelligence in the dairy industry, uterine immunity, reproduction, dairy nutrition, and necropsies. Youth were provided networking opportunities with 4-H members from across the state of Michigan, practice with judging dairy cattle and hands-on experiences, including dissecting udders and reproduction tracts. The conference concluded by going on a tour of the MSU Dairy Plant Processing Center. The conference aimed to educate 4-H youth and volunteers about dairy industry trends and opportunities. We are so glad Washtenaw County 4-H Youth got to take advantage of this opportunity.



# 4-H Club Happenings

## Saline 4-H Farmers Community Service and Crafts

Saline 4-H Farmers have been busy these last few months with a service project and also craft day! Each year, the Saline 4-H Farmers club members help beautify the Saline Township Hall with flowers. The club also hosted a craft day where members got to do perler bead crafts.

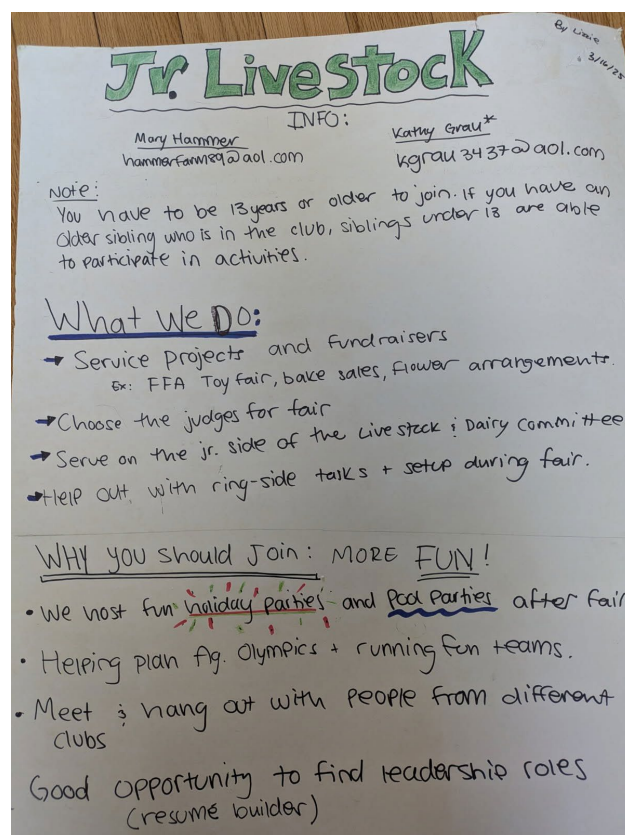


## Rogers Corners Herdsmen Educational Projects

Rogers Corners Herdsmen 4-H member Lizzie Pantolin did an educational project for her March club meeting on Junior Livestock. She presented information about what Jr. Livestock does and how joining can bring opportunities for youth! Check out her project to the right.

## Spotlight your 4-H Club or 4-H Volunteers!

We want to see more information about what's happening in all of our Washtenaw County 4-H Clubs and also spotlights for our amazing 4-H Volunteers. Please send any information or photos you would like featured to Jenny Speyer, [speyerje@msu.edu](mailto:speyerje@msu.edu) or text them to 734-436-1362.







# STATEWIDE CALENDAR OF EVENTS

**Showcase your photography, videography and graphic design skills at 4-H Dairy Days!**



New for 2025, Michigan 4-H Dairy Days will have feature three new contests! These contests are open to any Michigan 4-H youth ages 8-19, regardless of their enrolled project area.

Showcase your creative skills by submitting your entries to:

- Photography
- Graphic design
- Videography

So grab your cameras, get those creative juices flowing and show us what you've got!

Submissions are due June 5. Learn more at [tinyurl.com/DDcreative](https://tinyurl.com/DDcreative).

## June 6: Fairy Garden Workshop

*Britton*

Youth ages 5-19 will learn the basics of miniature gardening and some fairy lore.

[www.canr.msu.edu/events/fairy-garden-workshop25](https://www.canr.msu.edu/events/fairy-garden-workshop25)

## June 7: Garden Geocache Event

*Michigan 4-H Children's Gardens, East Lansing*

Cache veterans and new enthusiasts are welcome at this geocaching adventure. Bring your picnic lunch and enjoy a day of caching in the gardens. We will be finding new caches, trading travel bugs, exploring the gardens and much more.

[www.canr.msu.edu/events/garden-geocache](https://www.canr.msu.edu/events/garden-geocache)

## June 13: 4-H Terrarium Workshop

*Britton*

Youth ages 8-19 will create a miniature, self-sustaining ecosystem, in a controlled indoor environment.

[www.canr.msu.edu/events/4-h-terrarium-workshop](https://www.canr.msu.edu/events/4-h-terrarium-workshop)

## June 20: Garden to Table Summer Workshop Series

*Taylor Community Library, Taylor*

In this hands-on program, youth will explore the journey of food from seed to plate! Participants will learn how to plant and care for a garden, harvest fresh produce, and turn their homegrown ingredients into simple, healthy meals.

[www.canr.msu.edu/events/garden-to-table-summer-workshops](https://www.canr.msu.edu/events/garden-to-table-summer-workshops)

## June 24: Digger Day

*Michigan 4-H Children's Garden, East Lansing*

Come to the garden and explore the world of diggers. Front-end loaders, dump trucks and back hoes – all of these tools help with projects both big and small in our communities.

[www.canr.msu.edu/events/digger-day](https://www.canr.msu.edu/events/digger-day)

## June 28: Michigan 4-H Dairy Quiz Bowl

*Anthony Hall, East Lansing*

Come test your dairy industry knowledge against other 4-H'ers! This free event is open to any 4-H youth ages 8-19. Youth may enter as individuals or as teams.

<https://www.canr.msu.edu/events/2025-mi-4-h-dairy-quiz-bowl>







# STATEWIDE 4-H NEWS

## Register for the Michigan 4-H and FFA State Livestock Judging Contest

Registration is now open for the Michigan 4-H and FFA State Livestock Judging Contest! Participants can demonstrate their livestock evaluation and selection skills, as well as improve their communication and decision-making skills at this fun statewide contest. The day will include both individual and team competition with classes of beef cattle, Boer goats, sheep and swine.

Contest divisions include:

- 4-H Juniors - 4-H youth ages 8-13 as of January 1
- 4-H Seniors - 4-H youth ages 14-19 as of January 1
- FFA Junior High - FFA members that recently completed seventh or eighth grade
- FFA High School – FFA members that recently completed grades 9-12
- MLE - Youth ages 8-21 as of January 1 that are competing in the Michigan Livestock Expo but are not a member of 4-H or FFA
- Cloverbuds - 4-H youth age 7 as of January 1, non-competitive



While the dates for the contest no longer coincide with Michigan Livestock Expo (MLE), this contest does still count as an educational experience for the MLE Premiere Stockman Award!. Registration is due by June 12. Find registration information at [www.canr.msu.edu/events/4-h-and-ffa-livestock-judging-state-contest-2025](http://www.canr.msu.edu/events/4-h-and-ffa-livestock-judging-state-contest-2025).

## Ten Michigan 4-H volunteers honored for 50 years of service in 2025

For the fifth year, MSU Extension is celebrating outstanding volunteers who have given a half-century of service to Michigan 4-H. These individuals have pledged their heads, hearts, hands and service to improving the lives of youth and their communities through Michigan 4-H for the past 50 years.

“Simply put, our Michigan 4-H programs would not be possible without the help of caring volunteers who give their time and talent,” said Quentin Tyler, director of MSU Extension. “MSU Extension is grateful for every volunteer in every program, but these ten individuals deserve special recognition. They have given so much to 4-H over their five decades of service and we offer our heartfelt thanks for all they have given to support 4-H youth.”

The Michigan 4-H 50-year volunteers being recognized in 2025 are:

- |   |                                       |
|---|---------------------------------------|
| • Cheryl Barton, Shiawassee County      | • Vanessa Powell, Jackson County      |
| • Linda Bogue, Cass County              | • Diane Shepherd, Sanilac County      |
| • Lisa Coe, Barry County,               | • Paul Shoup, Mason County            |
| • Janel Horrocks-Boehmer, Ingham County | • Bernadette Strahl, Menominee County |
| • Sharon Mitchell, St. Joseph County    | • Marla Wedge, Allegan County         |

In recognition of their service, 50-year volunteers received a gift of appreciation from MSU Extension leadership, as well as a personal note of thanks. Tribute gifts in honor of any or all of these 4-H volunteers may be made to support 4-H at:

<https://mi4hfdtn.org/memorial-tribute-gifts/>.